



MAIS STAR* MAIS STAR* HORIZON



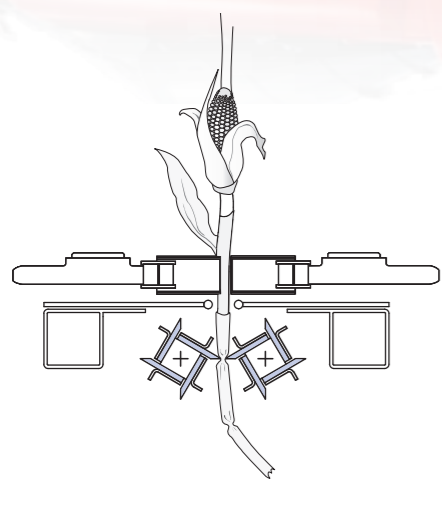
GERINGHOFF The perfect way to harvest.



Proven harvesting technology with intelligent design. For maximum efficiency and economy

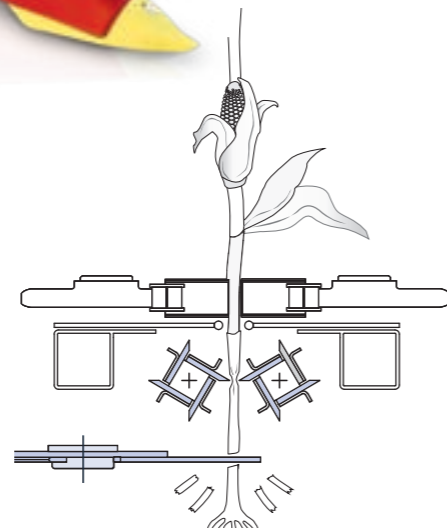
Geringhoff has been manufacturing maize headers for more than 50 years. Throughout all this time two questions have been foremost in our minds: firstly, how to improve our harvesting systems even further in order to find “the perfect way to harvest”, and secondly, how to design a maize header that does exceptionally well in a cost-performance comparison against competition machinery and yet still pays for itself quickly. The answer is here: Mais Star* and Mais Star* Horizon! Models of efficiency and economy. Designed for harvesting maize under any conditions, these headers are available with or without chopper, in both rigid and folding design.

Once you have decided which model is suitable for you, we build it to your specifications.



*Mais Star**

The MS principle: two counter-rotating header rollers, each equipped with four stripper knives, pull the maize stalk downwards in an aggressive but controlled manner. The maize cob is stripped off the header deck plates. The maize straw is left behind in the field unchopped where, among other things, it helps prevent soil erosion.



Mais Star Horizon*

The Mais Star* Horizon model integrates a horizontal chopper that together with the header row forms a fixed, almost maintenance-free unit. It cuts the plants very low, leaving short stubbles, and chops the maize straw pulled in by the knife rollers using very little energy. The chopper can also be disconnected.

Master of large fields – the Mais Star* from Geringhoff

This header will tackle any size of field. Equipped with up to 24 row units, it is one of the largest of its kind. Its high performance capability is the result of numerous innovations: driven by a heavy-duty gearbox made of lightweight but high-strength aluminium alloy, with a simple basic construction, it is a header system that offers an extremely long service life with no sensitive or fast-wearing parts. The components susceptible to servicing are easily accessible and simple to change. This is how machinery must be designed if it is going to have real staying power.



- * Frameless, weight-saving design
- * Virtually maintenance-free oil-bath gearbox
- * Interior oil-bath-cooled safety clutch for the header rollers
- * Header rollers with knife blades and additional working edges
- * Quick-change system for the gathering chains
- * Gathering chains automatically tensioned for life
- * Gathering chain guard to protect against foreign bodies
- * Simple, easy-to-service design



Mais Star* 1200 – the Mais Star* headers are available with up to 24 rows.



Proven harvesting technology with built-in Geringhoff quality:
reliable – efficient – long-lasting.

Robust system, innovative technology – the Mais Star* Horizon

This maize header will make you happy for a very long time. Following the long-standing Geringhoff tradition, we have perfected the tried-and-tested cutter-roller header system right down to the very last detail, so it can occupy its rightful position as the latest benchmark in its performance class.

One key design feature is the high-strength aluminium alloy gearbox to which all components are attached directly – for maximum performance, weight-saving, operating safety, fuel economy and longevity.

Every maize plant is faultlessly pulled downwards vertically, enabling the heading process to be performed very gently with minimum loss. The Mais Star* Horizon performs well from another standpoint: the impurity of the header and combine is particularly low.

The Mais Star* Horizon looks good under any aspect – but especially from the cost point of view: thanks to rapid amortisation, low operating costs, minimal maintenance requirements and a simple and service-friendly design.



Well-managed harvest-time, short-cut stubble, good straw chopping.



Horizontal chopper can be disconnected.



Quickly from field to field

There is no denying the advantages of the folding header when it comes to road transport. But even more interesting is the savings effect: the shorter the set-up times, the longer the production times. Changing from the transport to the harvesting position takes between just 1 and 2 minutes. And all at the mere push of a button.

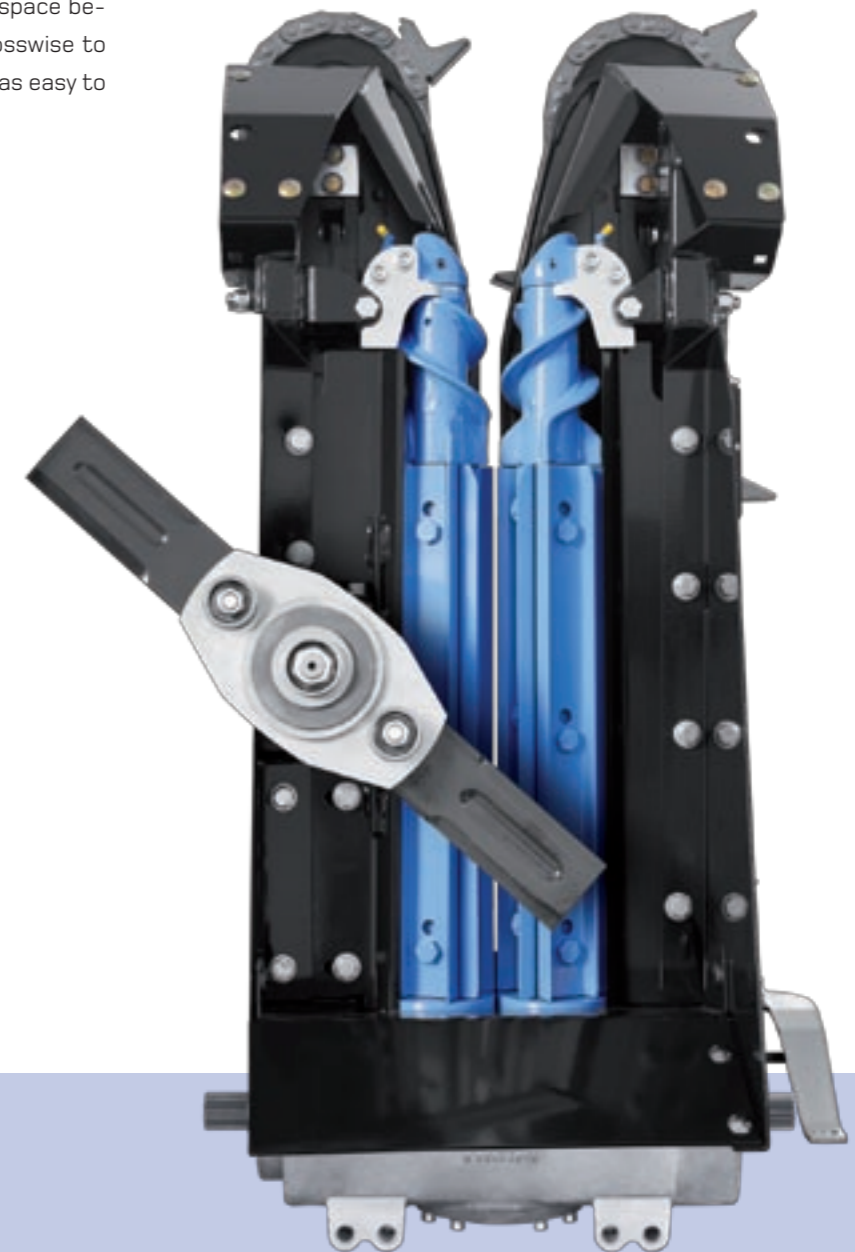
The folding versions of the Mais Star* and Mais Star* Horizon are supplied as standard with automatic, self-locking drive couplers that enable the full use of the harvester-specific lateral tilt compensation function. Self-locking drive couplers are used to automatically close the drive line from the combine harvester to the maize header, doing away with the need to attach the driveshaft by hand.

Works as good as it looks: the Mais Star* row unit with horizontal chopper

The optimum positioning of the stalk chopper beneath the row unit enables regular short stubble cleaning even if the space between the rows varies or if it is necessary to work crosswise to the rows. Material that contains weeds or grass is just as easy to chop as particularly tough and overripe fields.

The horizontal chopper scores through:

- ★ Very good straw chopping
- ★ Very good maize straw distribution
- ★ Short stubble
- ★ Specially coated, self-sharpening chopper blades
- ★ Safety clutches to protect against foreign bodies
- ★ No need for extra mulching or re-chopping



Benefits wherever you look



All important components are easily accessible

One unique feature is the quick-change system for the gathering chains, supplied with a chain tool that enables a gathering chain to be dismantled and refitted in around 60 seconds.

Covers and divider noses can be slightly opened or completely removed without using any tools.



All operating conditions safely under control

Is the header speed correct? Is the combine harvester drive working slip-free? The digital monitor has ten differently coloured LEDs that indicate the selected position of the header deck plates.



The folding row connections are equipped with self-locking flexible couplings.



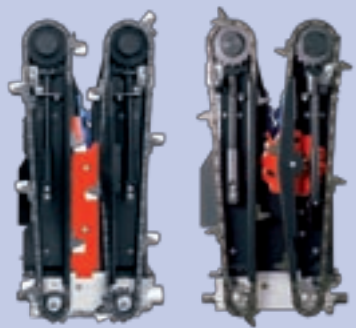
Maintenance-free, vibration-absorbing couplings between the rows guarantee trouble-free operation.



The very finest technology: the high-performance drive mechanism

High-performance levels demand exceptional drive systems. The proven geared drive mechanism from Geringhoff is powerful and operates without slip. The mechanism facilitates simple reversing of the header. Outstanding longevity, minimal maintenance and great flexibility when the harvester is changed. There is no better solution.

Well equipped for all eventualities: the extras



Additional equipment for the sunflower harvest

As an option, the Geringhoff maize headers can be fitted with an active or passive sunflower harvesting attachment. The version required depends on the size of the area to be harvested and the crop conditions.

Variable speed gearbox for greater variability

As an option, the standard geared drive mechanism can be fitted with a two, three or five-speed variable gearbox. This allows you to choose between a number of different speeds when harvesting both maize and sunflowers. The gearbox can be retrofitted at any time.

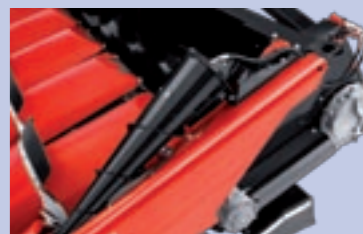
Stubble-breaker

The height-adjustable, spring-loaded skids of the stubble-breaker bend the stubble (for tyre protection), ensuring that it lies at a minimal height above the ground.



Additional equipment for lodged maize

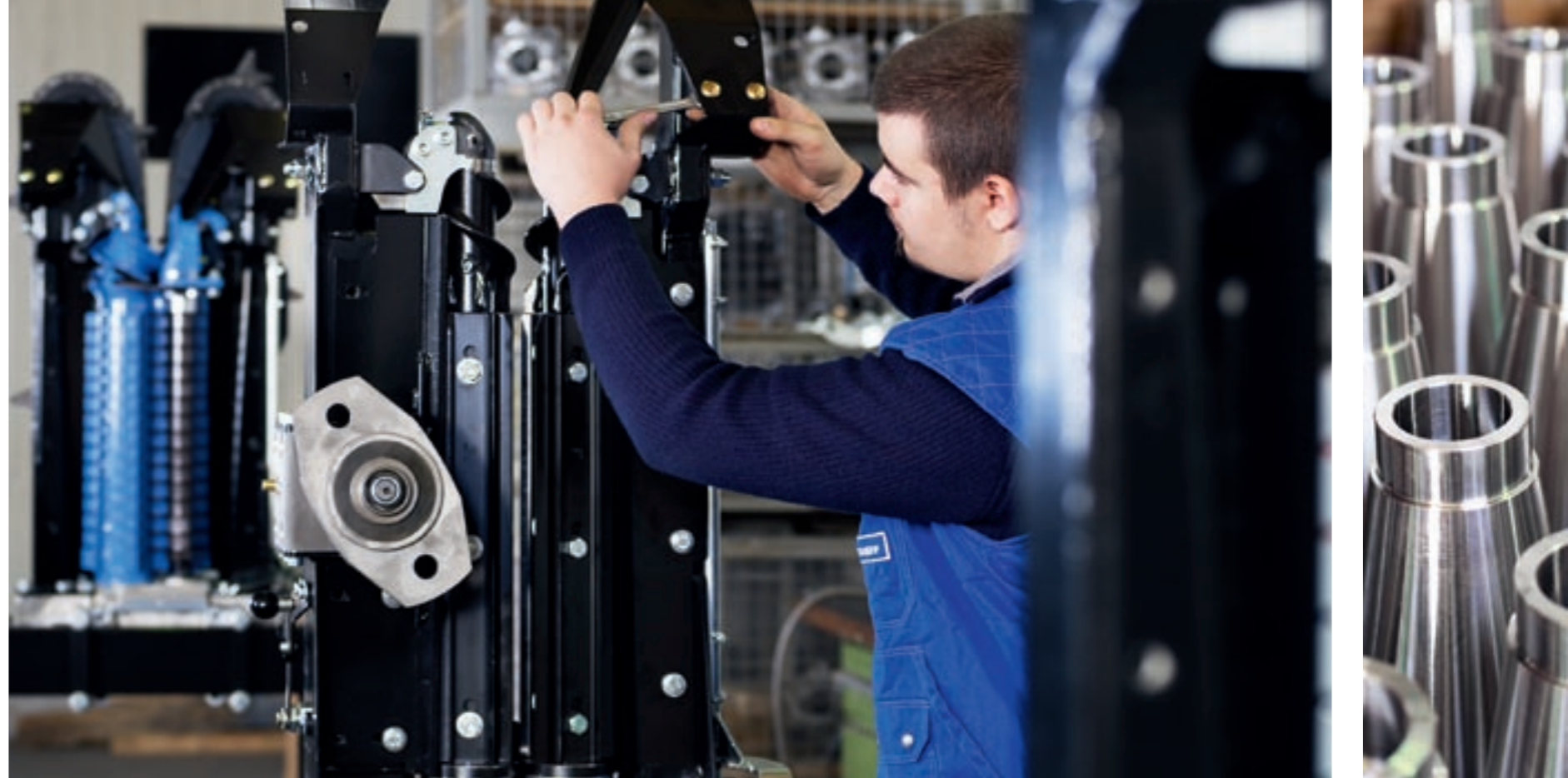
It may be necessary in extreme harvesting conditions to use cone-shaped augers on the outer shields. These augers are driven either by the on-board hydraulic system or directly by the combine harvester's hydraulics, depending on the model of combine. The augers can be mounted on the right, left or on both sides.



Automatic ground sensors are available on request

As an option and subject to the respective model of combine harvester used, an automatic self-levelling attachment can also be supplied for the maize header to adjust it to uneven ground and for contour control if required.





The perfect way to harvest – our vision and mission since 1880

Innovation has a long tradition at Geringhoff: after founding the company in 1880, Carl Geringhoff initially supplied the farming community in the surrounding area with harvesting machinery and traction engines. Just under ten years later, in 1890, the company founder began developing his own threshing machines. Geringhoff's specialisation in maize harvesting technology did not take place until 1956, with the building of maize shellers to remove the kernels from cobs. In 1958, the world's farmers were

able to marvel at our first tractor-drawn corn cob pickers. And in 1962 – more than 45 years ago – Geringhoff launched the first maize header for combine harvesters. The forerunner of today's header systems, with straw crushers mounted below the row unit, came onto the market in 1965. Over the decades, Geringhoff's product range has developed into today's diverse portfolio of maize header systems, systems that are more than capable of meeting any farmer's harvesting requirements.

Technical data

| MAIS STAR* | NO. OF ROWS | ROW WIDTH (cm)"/" | TRANSPORT WIDTH (m) | WEIGHT APPROX. (kg) |
|---------------------------|-------------|-------------------|---------------------|---------------------|
| RIGID MODELS | | | | |
| MS 400 – 1800 B | 4–18 | 70–75/30 | 3.00–13.85 | 1,290–5,560 |
| MS 800 – 2400 B | 8–24 | 20 | 4.50–12.65 | 2,160–6,020 |
| MS 800 – 1800 B | 8–18 | 22 | 4.85–10.45 | 2,160–4,670 |
| FOLDABLE MODELS | | | | |
| MS 600F – 1600 FB | 6–16 | 70–75/30 | 3.00–6.30 | 2,080–5,660 |
| MAIS STAR* HORIZON | | | | |
| RIGID MODELS | | | | |
| MS-H 400 | 4 | 70–80/30 | 3.00 | 1,520 |
| MS-H 500 | 5 | 70–80 | 3.76–4.10 | 1,835 |
| MS-H 600 | 6 | 70–80/30 | 4.40–4.90 | 2,120 |
| MS-H 800 B | 8 | 70–80/30 | 5.80–6.50 | 2,810 |
| MS-H 900 B | 9 | 70–80/30 | 6.50–7.30 | 3,340 |
| MS-H 1200 B | 12 | 70–75/30 | 8.60–9.30 | 4,350 |
| FOLDABLE MODELS | | | | |
| MS-H 600 F | 6 | 70–80 | 3.00 | 2,460 |
| MS-H 800 FB | 8 | 70–80/30 | 3.00–3.30 | 3,290 |
| MS-H 900 FB | 9 | 70–75 | 3.75 | 3,600 |
| MS-H 1200 FB | 12 | 70–75/30 | 4.80 | 4,570 |

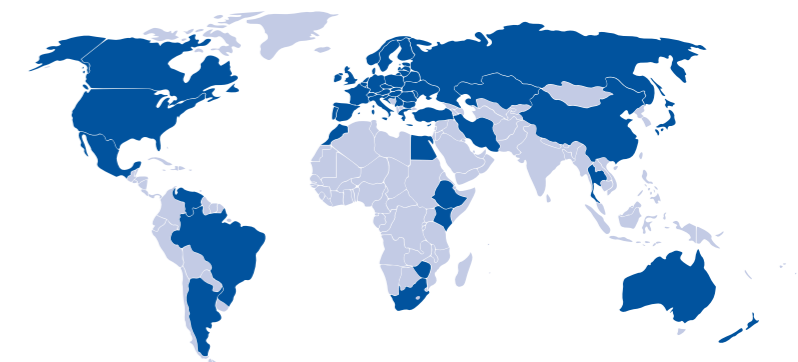
Geringhoff harvesters are compatible with all makes of combine harvester. Subject to modifications.

Round-the-clock service

- ★ 24-hour availability – for all eventualities
- ★ Long-standing, personal support for our customers
- ★ Genuine parts always immediately available
- ★ Lightning-fast delivery on request (overnight shipping)
- ★ On-site service, even at the most unusual times

Systems consulting by experts

- ★ Free consulting assistance in deciding what system to purchase
- ★ Professional consulting training for dealers



Geringhoff – a global player.

GERINGHOFF

Carl Geringhoff Vertriebsgesellschaft mbH & Co. KG

Porschestraße 8

59227 Ahlen (Westfalen)

Germany

Tel. +49 23 82 9814 0

Fax +49 23 82 9814 40

Internet www.geringhoff.de

E-mail info@geringhoff.de